

TE REHIA
THEATRE



Te Tangi a te Tūī

by Amber Curreen & Tainui Tukiwaho



www.tetangi.show

Contacts

Amber Curreen | Te Rēhia Theatre
amber@tepoutheatre.nz
Ph: (+64) 21 775 276

Rachael Dubois | The Dust Palace
producer@thedustpalace.co.nz
Ph: (+64) 22 542 7057

Creative Team

Director: Tainui Tukiwaho

Writers: Amber Curreen & Tainui Tukiwaho

Co-Creator: Eve Gordon

Circus Director: Geoff Gilson

Lighting Design and Production: Jane Hakaraia

Music and Sound Design: David Atai

Production, Rigging Design: Andrew Gibson

Producer: Rachael Dubois

Stage Manager: Edward Peni

Cast

Tainui Tukiwaho

Amber Curreen

Paku Fernandez

Eve Gordon

Joe Dekkers-Reihana

Te Rongopai Curreen-Tukiwaho

Geoff Gilson

Luis Meirelles

Mary Piggin

Home Base

Auckland, New Zealand

Touring Party

13: Cast of 9 + Operator, Rigger, Producer/Tour
Manager & Stage Manager

Genre

Māori Circus Theatre

Language

Te reo Māori - English audio track provided to
audiences prior to the show.

Show Length

90 mins plus an interval

Warnings

Strobe and haze effects, depiction of violence

Video Links

[1 min trailer](#)

[Full show](#) (2023 Vancouver season)

[Development interviews and showing \(45 min\)](#)

Theatre Configuration

End on



About the Show

Te Tangi ā te Tūi, he karanga no te kainga, pulling us heart-first back to the ngāhere.

The loss of the legendary original voice of the Tūi provided the inspiration of this work; a parallel to the loss of Te Reo Māori. Te Tangi ā te Tūi tells a tale of love and hope that spans generations.

Tūi soaks up the world around it and responds in song. Though beautiful, his tune now is a faint echo of what it once was when Aotearoa was blanketed in the ngāhere, flutes of patupaiarehe filled the trees and Māori alone walked gently upon their mother. This new work brings together Kaupapa Māori theatre and cirque theatre to create an evocative narrative of love and loss between Māori, Patupairehe and the natural world in the face of colonial impact. Our story speaks in parallel to te reo Māori, the voice of the tangata whenua and grave significance of kaitiakitanga of Aotearoa around climate change and the world-wide loss of biodiversity.

Te Tangi ā te Tūi is a Māori circus theatre work about adaptation and authenticity. By concurrently developing narrative, design, movement and circus language, Te Tangi ā te Tūi has forged a new path in Māori cirque theatre.

The work was developed across 2021- 2022. It premiered in October 2023 at The Cultch, Vancouver and then in Aotearoa/New Zealand at Te Pou Theatre in March 2024.

Collaborating Companies

Te Rēhia takes the creative lead on the project with Amber Curreen as the writer and Tainui Tukiwaho as co-writer and director. The Dust Palace provides creator Eve Gordon, cirque theatre expertise and Geoff Gibson as circus director. Set and Lighting designer Jane Hakaraia collaborates with Apparatus Designer / Engineer and Rigger Andrew Gibson to provide the visual world of the piece. Producer Rachael Dubois makes up the remainder of the core creative team.

Amber Curreen (Ngāpuhi) is a kaupapa Māori focused arts manager, playwright (MAHUIKA, Te Rōhi and Kōpū) and performer who leads Te Rēhia Theatre Company and is a founding leader of Te Pou Theatre, Auckland's Māori home for theatre.

Tainui Tukiwaho (Te Arawa, Tuhoe) is an experienced theatre maker (Black Ties, Astroman, Racists Anonymous, Peter Paka Paratene), reo Māori speaker and has been a company director, producer, director, actor and writer of Māori theatre for a number of organisations including Taki Rua, Te Pou and Te Rēhia.

First trained as an actor, Eve Gordon founded and has driven The Dust Palace circus theatre company to the position it is in today. She has won awards, been sought after and heralded as the 'Beyonce of New Zealand circus'.



Te Rēhia Theatre, established 2012, is a proudly Māori theatre company, championing Māori playwrights, tikanga Māori arts practice, te reo Māori and the presentation of our diverse stories. The company is led by Amber Curren and Tainui Tukiwaho and based at Te Pou – The Auckland home of Māori Theatre.

We have presented seven annual years of Te Reo Māori theatre for youth and three te reo Māori works for theatre *He Tūrū Māu* (2018), *E Kore A Muri E Hokia* (2017), *Purapurawhetū* (2016).

We keenly support Māori playwrights; regularly presenting the work of Albert Belz including *Cradle Song* (2018) and *Astroman* (2019), Regan Taylor's *Solothello* (2014-18), and Tainui Tukiwaho's *Hoki Mai Tama Mā* (2014) and *BLACK TIES 2020*

The Dust Palace, established by Eve Gordon and Mike Edward in 2009, is now the leading circus theatre company in Aotearoa and represented 56% of the circus community in the 2019 circus sector census.

The Dust Palace exists to elevate contemporary circus culture, grabbing audiences by the guts, shifting hearts, minds and lifting spirits. We build multi-generational creative capacity in the circus performers of Aotearoa, holding the next generation of talent, encouraging practice and empowering a bold future for the art form.

Collaborations include; *DAWN* and *MIDNIGHT* with the Auckland Philharmonia Orchestra, *TOP OF THE HEAP* with Auckland Arts Festival; international tours of *THE WONDERWOMBS* and *THE GOBLIN MARKET* with The Cultch in Vancouver and large-scale stadium collaborations in Palmerston North, *ITHACA* and *LE CIRQUE VOLÉ*, and Invercargill, *HUMAN*.

Our latest shows include party cabaret *HAUS* of *YOLO* and family environmental show *THE ICE CREAM IS MELTING!*



Selected Reviews

“Visually and emotionally powerful... TeTangi a te Tūi is as beautiful as it is insightful, timely, and thought-provoking, in all its complexity”
Vince Kanasoot, Stir Vancouver

“a beautiful and breathtaking show.”
Alan Woo, Fun! Fun! Vancouver!

“The cast’s physical prowess remains consistently impressive...”—Angie Rico, VancouverPlays



“As you delve into the show’s layers, you’ll find an uncompromising, free flowing, yet thematically sophisticated tale, complete with sensory rushes that will have you perched at the edge of your seat.”—Angie Rico, VancouverPlays

“I was so touched by the performance...It reminded me that our stories are important, they’re real, and they can be so universal. More importantly, it reminded me that (in relation to my work and my life in indigenous language) that our dreams are possible, they’re real, they’re big, and they’re beautiful. Te Tangi a te Tūi showed me what’s possible!” - Dakota Bird Anderberg, Indigenous advocate

“Standing among a full standing ovation at the Te Pou Theatre, there was no mistake that Te Tangi a te Tūi is a powerful, breathtaking, and important show” Marisa Diamond, Theatreview



“Groundbreaking, majestic and spectacular, the weaving of Te Reo Māori storytelling with cirque performance of high calibre, makes this show a must-see for audiences of all ages and cultures. It transcends language and it leaves us in a state of blissful awe.” - Tatiana Hotere, Theatreview



“The play is performed fully in Te Reo Māori (a dramatised recorded English version is available for listening before or after the show). But one does not need to be fluent in Te Reo to be captivated by the astonishing performances. Euphoric, melancholic and inspiring Te Tangi a Te Tūi is enchanting. It’s a fest for the senses. A banquet for the soul. A balm for the heart.” - Tatiana Hotere, Theatreview

“The story is intensely and intentionally Māori, but the lessons to be learned are resonant with all Indigenous communities...When we say we want more decolonial theatre, Te Tangi e Te Tūi is exactly what we mean.” Marisa Diamond, Theatreview

Pre-production requirements

Presenter/Venue to provide

Full venue specifications including:

- CAD drawings of venue including grid plan
- Position and detail of sound system
- Venue equipment list
- Seating plan

Company to Provide

- Draft lighting and rigging plans 2 months prior to opening
- Revised lighting and rigging plans 2 weeks prior to opening
- JSA - Job Safety Analysis and Technical specifications on all circus acts
- All show necessary props, rigging gear, apparatus and consumables except where mentioned above

Touring Company

The company to provide up to a maximum of 13 people:

- 1 x producer / tour manager
- 1 x operator
- 1 x stage manager
- 1 x rigger
- 9 x performers

Freight (2 sets - located in Vancouver & Auckland)

- 6 x Rakau (4m flying pole type apparatus)
- 1 x Rau (4m feather shaped apparatus) - located in Vancouver & Auckland
- 2 x custom Rostra

Freight to travel with touring company (ground/air)

- 12 x Aerial Silks
- 1 x Aerial Net
- 4 x Aerial ropes
- 1 x Aerial straps
- Vinyl awa (river) in pieces
- Set dressing (fabric)
- Costumes
- Props (2 x staff, walking stick, other small items)

Set items hired locally

- 1 x Bathtub
- Curved truss to build moari swing
- 11 x Rostra with various leg heights

Crew Requirements

- Circus & Set Bump-in Crew: 4 crew x 4 hours (includes venue rigger)
- Lighting Bump-in Crew: 3 crew x 4 hours
- Lighting Plot/Focus: 2 x venue technician x 4 hours
- Performance Crew / Rigger/Puller: 1 crew x for all rehearsals and show calls
- Bump-out Crew: 4 crew x 3 hours

Rigging requirements

- 6 x fixed points for aerial performance (silks) - (negotiable)
- 5 x flying points for aerial performance flown live during the performance (space allowing). These will require suitable anchors at stage level. (Rakau)
- 1 x fixed point for the 3:1 pulley system with centre stage right pick up. (Rau)
- Maximum number of people in the air at one time is 7, spread across the room.
- Maximum dynamic load on any point is 400kg

Stage Requirements

- Minimum stage space 8m x 6m
- Minimum height for aerial performance 5m from stage to rig and good sightlines from the highest seating level

Sound Requirements

- Venue PA or an appropriate PA system
- Stage mics sufficient to pick up vocal delivery (venue dependent)

Masking

- Masking will depend on the venue, ideally we would like at least 4 sets of legs to mask wings and lighting booms. Venue specific masking plans will be provided prior to bump in.

Theatrical Effects

- 1 x Hazer (water based only)
- 1 x Low Fog machine
- A venue that is isolated and/or an alarm system that are unaffected by smoke effects

Lighting Control

- DMX signal to all necessary lighting fixtures from two universes
- ETC Console (Ion, Ion XE or Gio)

Company to provide

- This performance is operated by our touring LX technician and will come with the appropriate files for a ETC Ion or Gio

Conventional Lights and Bars

- 6x 3m high booms split evenly across the stage. 3 Stage Left and 3 Stage Right
- Gel/colour as specified on the Lighting Plan
- Approx LX fittings as below (there may be very slight changes to numbers as plot is adjusted to venue) Substitutions negotiable
- 10 x profiles (angles TBC)
- 8 x Leafy Breakup gobo for supplied profiles
- 13 x Fresnel or PC

Moving and DMX Lights

- 12 x unit LED Par Cans with zoom pref Rush or Elp Par
- 4 x Moving head LED wash pref Martin Mac Aura
- DMX and power cables to suit plans
- 2 x Martin Viper Performances
- DMX and power cables to suit plans
- Substitutions negotiable

Dressing Room

- Mirrors, makeup lights and hanging space is required
- Dressing rooms must be private, secure and close to the stage

Venue Facilities

- The presenter to provide tea, coffee, water and access to a microwave and fridge
- Free internet access is appreciated
- Access to washing machine and dryer

Freight items



Rakau x 6
407cm long, 35cm wide
4cm deep, 4cm tube
10.7kg

(stored in Auckland & Vancouver)



Rau x 1
321cm long, 116cm wide
4cm tube
15.7kgs

(stored in Auckland & Vancouver)



Aerial Net
44cm width, 44.5 height
63.5 length
26.8 kgs

(stored in Auckland & Vancouver)



Custom Rostra x 2
1600cm x 1600cm, 40kg
(stored in Auckland & Vancouver)



Aerial Silks x 12
Each silk weighs est. 4kgs
Total 48kgs



Costumes x 9
Each weighs est. 2 kgs
Total 18kgs

Local hire items



Claw foot Bathtub
73cm width, 67cm height
173 cm long
On rolling platform



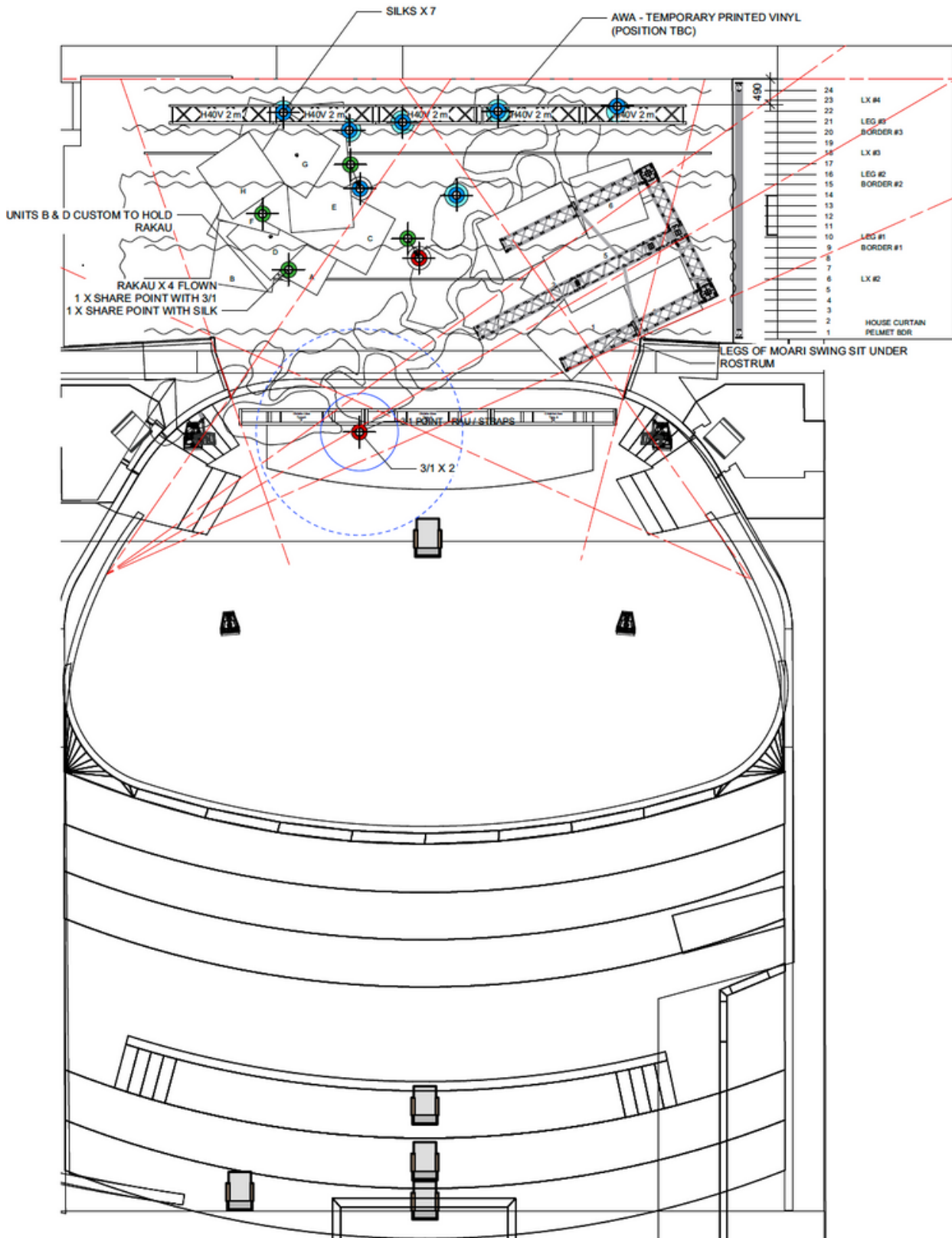
Curved truss and base as per
plans in set design



12 x rostra/risers with
various leg heights as per
set design

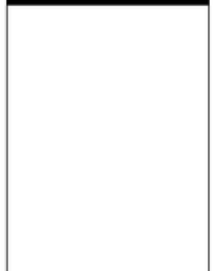
Rigging & Staging Plans

Stage plan and rigging points (York Theatre, Vancouver)



Drawing no	revision	sheet size
PL_01	05	A3

legend



notes

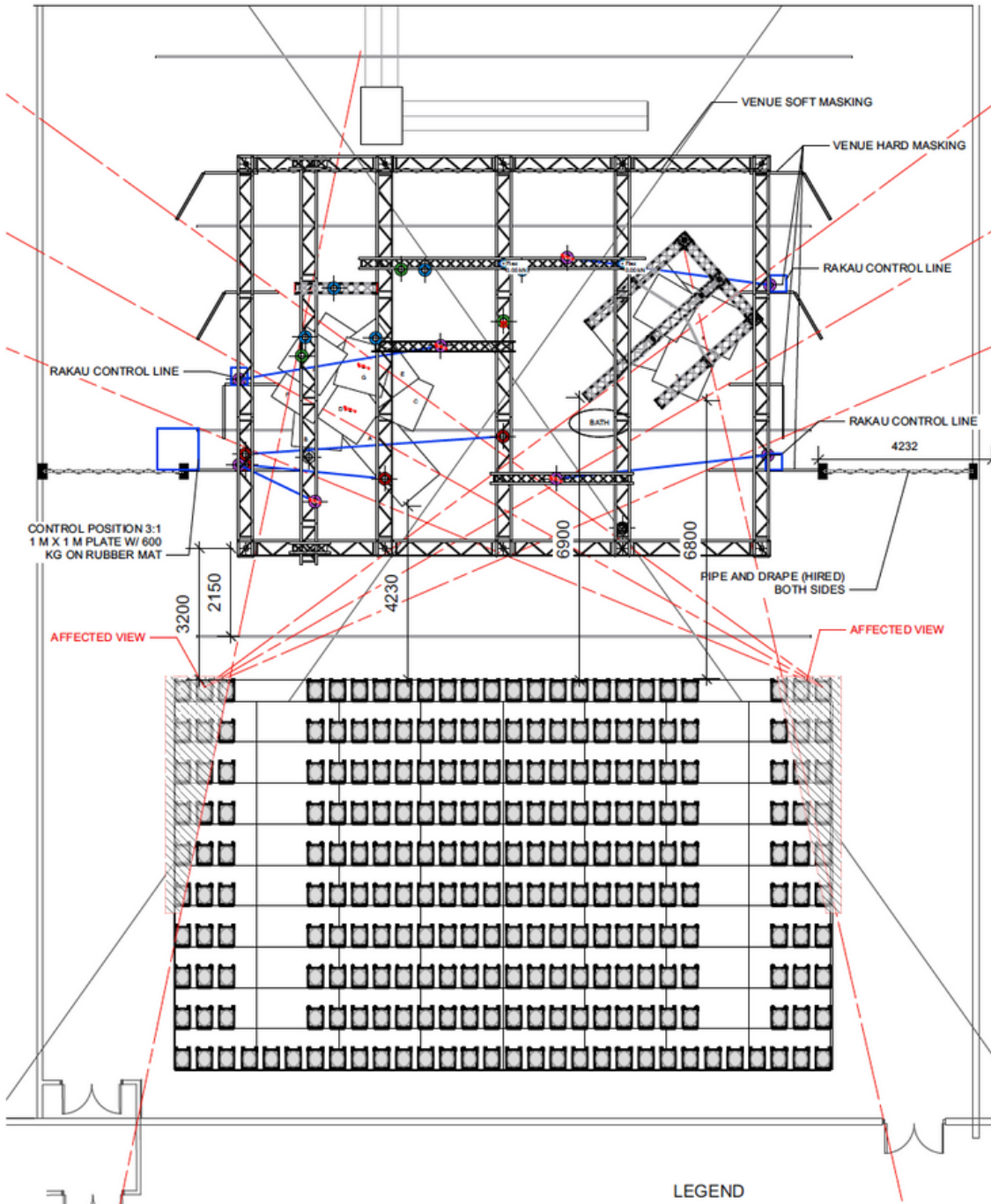


the dust palace

information

client	DUST PALACE
project	Te Tangi ā te Tūi
venue	THE YORK
title	DRAFT PLAN
designer	J. HAKARIA

Stage plan and rigging points (Te Pou Theatre, Auckland)



drawing no	revision	sheet size
PL_01	07	A3

legend

notes



information

client	DUST PALACE
project	Te Tangi a te Tūi
venue	TE POU
site	DRAFT PLAN
designer	J. HAKARIA
scale	1:100
drawn	GIBBO
date	19/01/2024

LEGEND

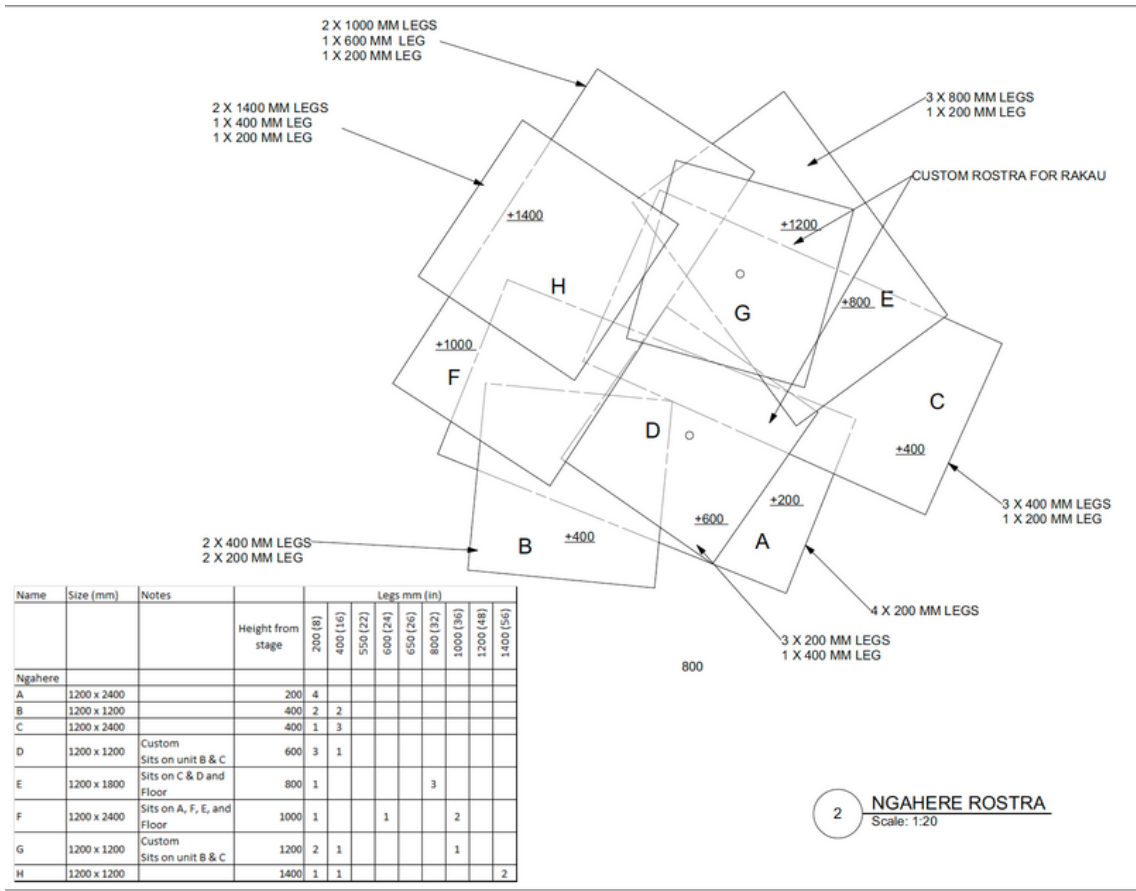
- HAMMOCK
- SILK
- 3:1
- RAKAU
- SPANISH WEB
- STRAPS

1 TE TANGI A TE TŪI AT TE POU
Scale: 1:100

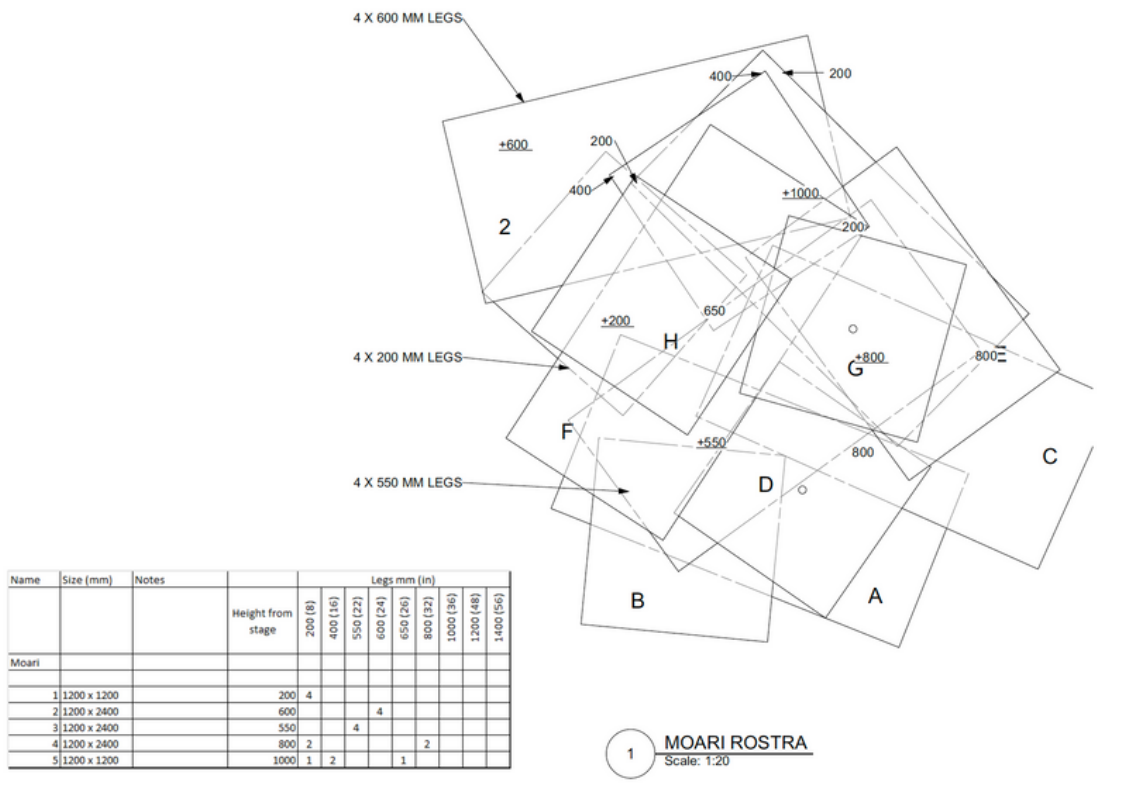


Rostra layout

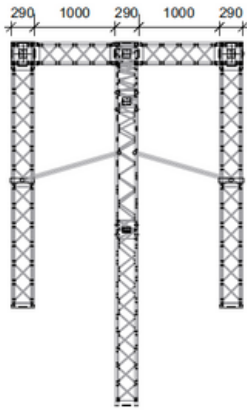
Stage right



Stage left



Curved truss Moari swing



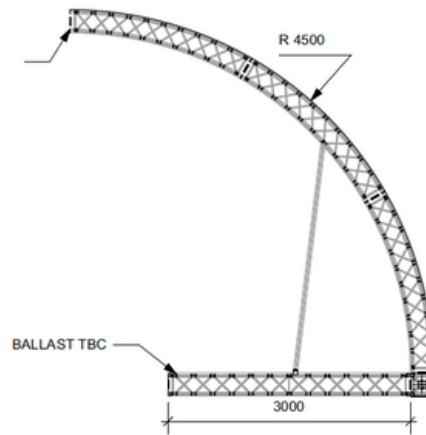
Description	QTY	Notes
Box Truss 300 mm x 3.0 m	2	
Box Truss 300 mm x 1.0 m	2	
Box Truss 300 mm BOX 'L'	2	
Box Truss 300 mm BOX 'T'	1	
Box Truss R9000 mm Curve ¹	3	To create 90deg
TUBE 3.0 M	2	Bracing tubes
TUB 0.4 M	3	for point at end of curve and across legs
COUPLER SWIVEL	8	
COUPLER 1/2 W/ 1/2 CC	2	

1 MOARI SWING - TOP VIEW
Scale: 1:50



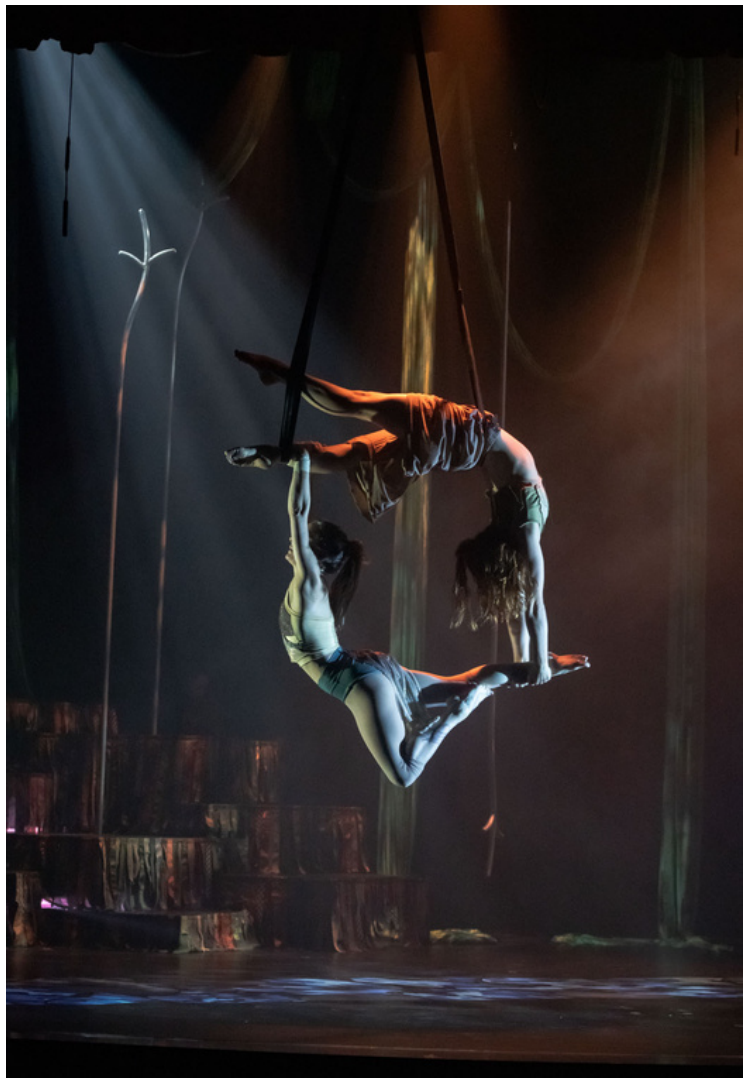
2 MOARI SWING - FRONT VIEW
Scale: 1:50

SHORT TUBE CONNECTED TO END FOR APPARATUS ATTACHMENT



3 MOARI SWING - SIDE ELEVATION
Scale: 1:50





www.tetangi.show